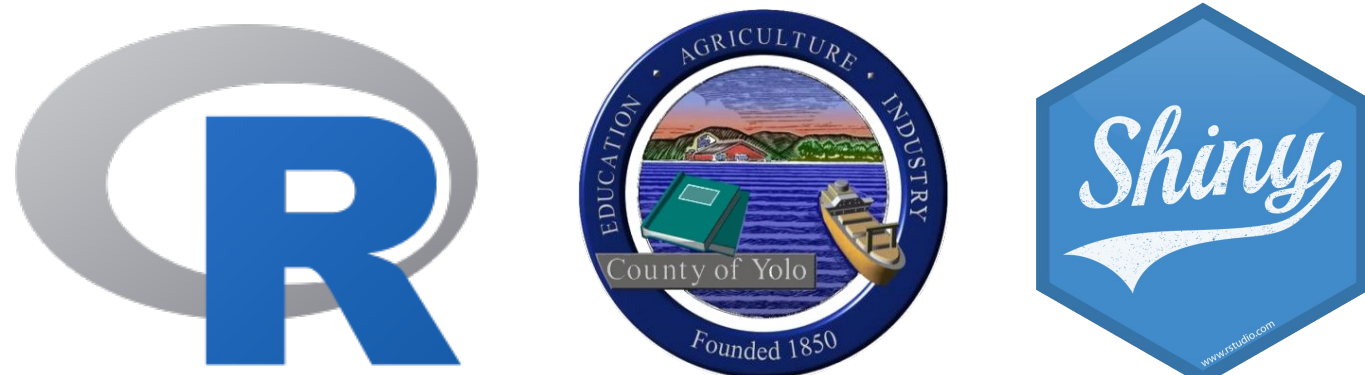


Abstract

Our goal was to create an interactive dashboard using R Shiny for residents and researchers of Yolo County. The dashboard allows for improved access to community and health resources and provides insights about county-wide demographics.



We hope that the dashboard will eventually become a “one stop shop” for Yolo County residents to find the information and resources they need.

Future work will involve adding more resources to the dashboard, incorporating other platforms, and expanding this work to Durham County.

Objectives

- ❖ Identify resources that would be valuable for residents and researchers in Yolo County, California.
- ❖ Find data sets that are current and updated with some frequency
- ❖ Wireframe a dashboard and create it using R Shiny
- ❖ Ensure the dashboard helps underrepresented groups and is available in English, Spanish and Russian.
- ❖ Package and publish the dashboard for public access with proper documentation for further maintenance and improvement.

Data

- ❖ American Community Survey
Map Data
Updates Annually
- ❖ California Health and Human Services Open Data Portal
Data throughout California
- ❖ Data Acquisition by a team of UC Davis Students
Obtained local Resources
Organized Data Collection



Results

We were able to create an interactive dashboard with R Shiny that allows Yolo County residents to **find healthcare providers, childcare, food resources, transportation and community organizations.**

Our resources specifically **provide information and assistance for low-income residents** who may not have insurance or seek affordable options. Additionally, our dashboard can easily be translated into Spanish and Russian.

Lastly, we were able to compile comprehensive documentation and work with the Pod Center at UC Davis to **create a plan for maintenance and future improvement of the dashboard.**

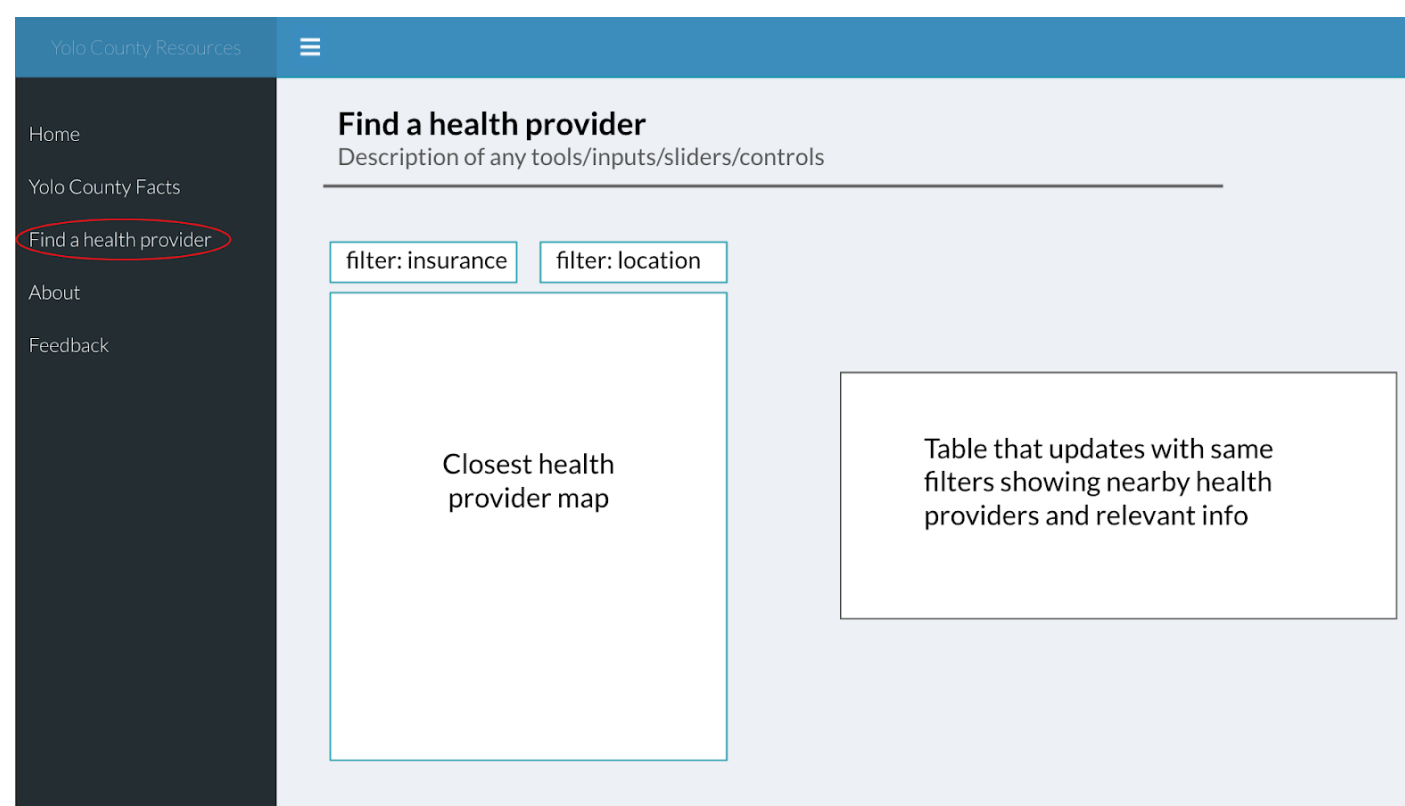


Figure 1: Wireframe of the health provider tab of our dashboard

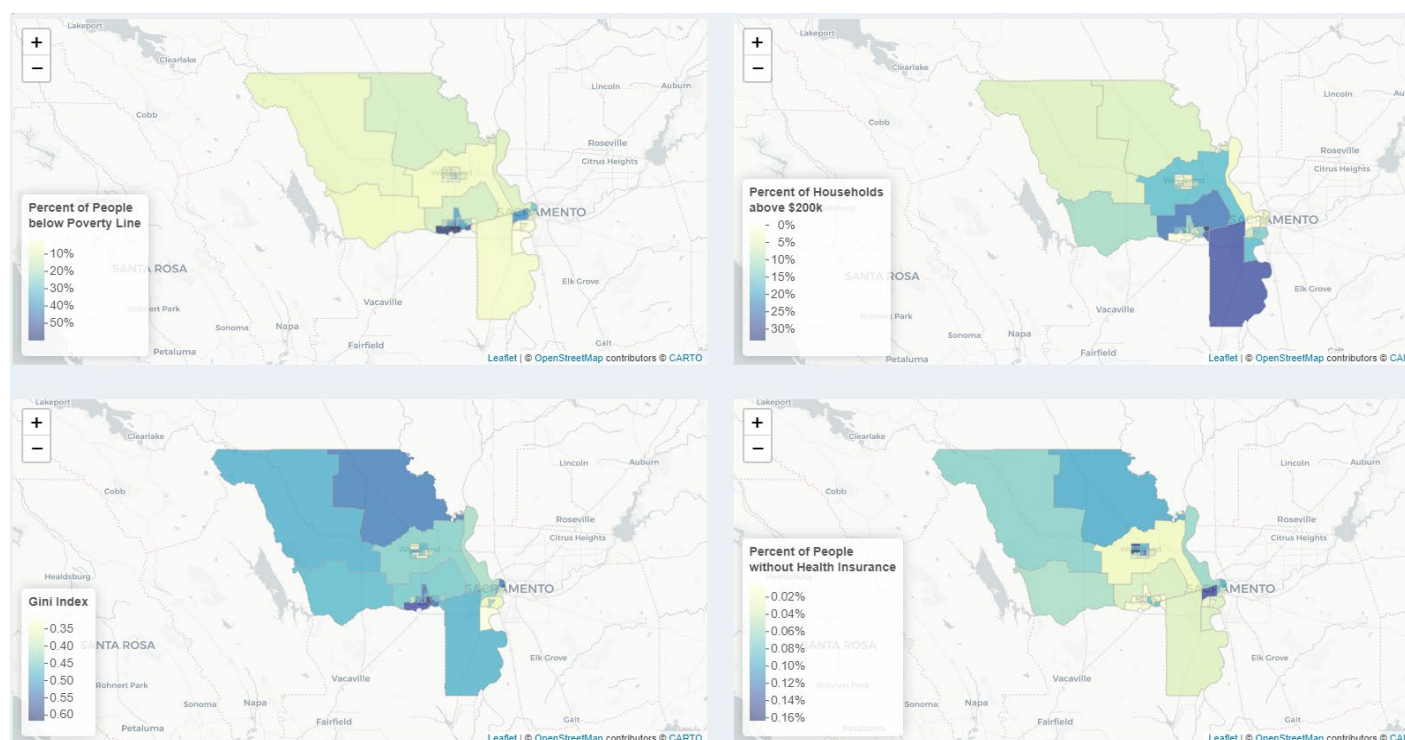
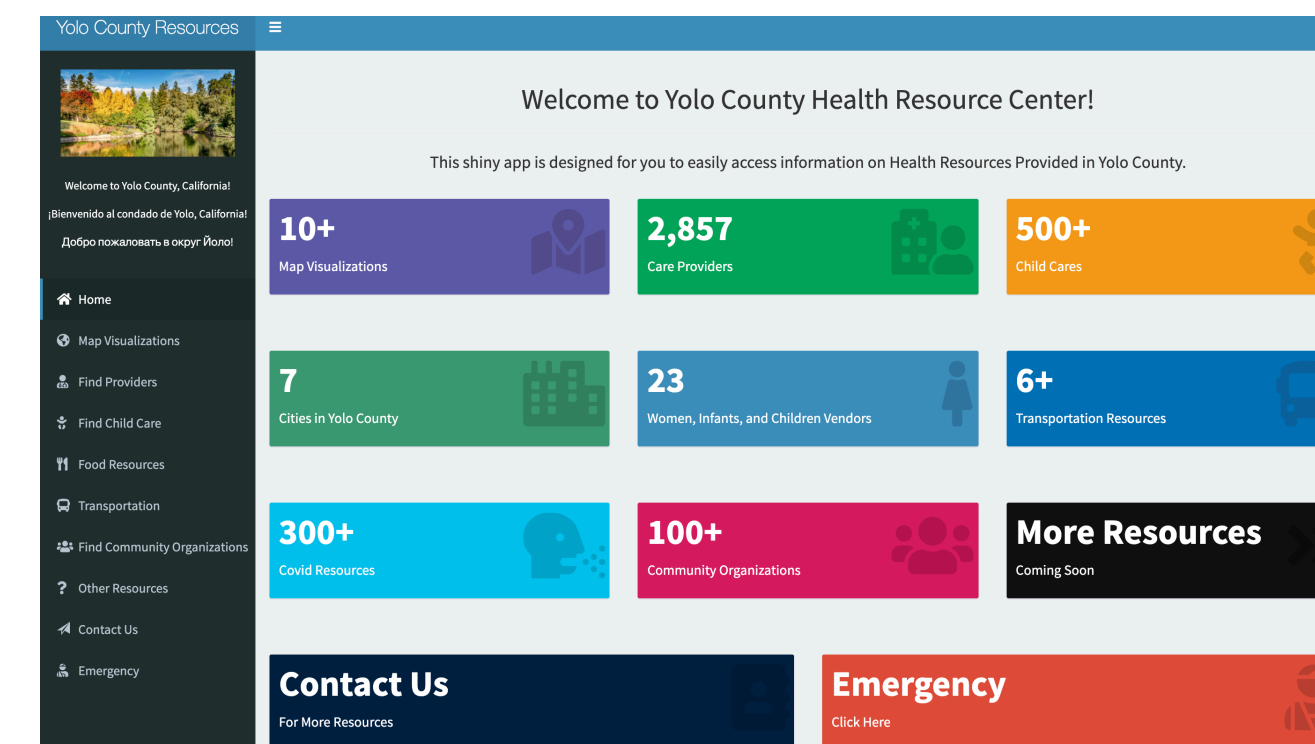


Figure 2: Interactive Maps of Yolo County created with the leaflet package and data acquired from the ACS

Conclusion



We created an Interactive Dashboard ...

- ❖ with an informative home page
- ❖ with 10+ pages
- ❖ in 3+ languages
- ❖ with 100+ resources and 2000+ medical providers
- ❖ catered to the user's unique needs

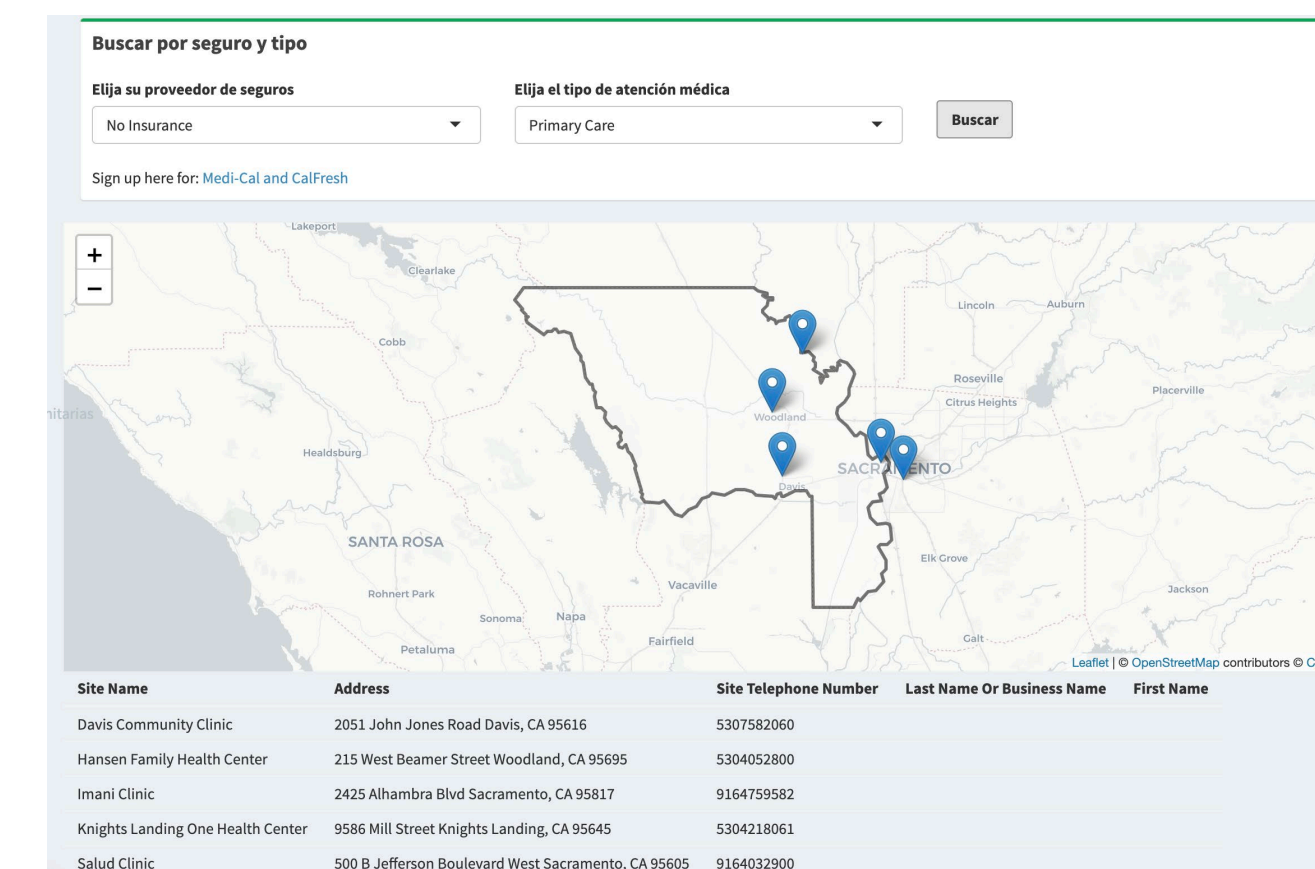


Figure 3: The health provider tab of our dashboard, shown in Spanish

Acknowledgements

We would like to thank **Paul Bendich, Gregory Herschlag, and Ariel Dawn** for organizing Data+ and making this opportunity possible.

We would like to thank **Jennifer Phipps, Leigh Ann Simmons, Liz Snyder-Fickler and Nicole Lawrence** and **Resilient Yolo** for formulating this project and their continued guidance.